

## Quick Guide

### Turning On/Off and Calibration

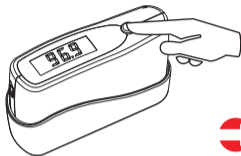
See P10 of the manual

Press and hold:  
On/Off



After buckled into  
the Holder properly,

Press: start calibrating



It must stay in  
the Holder properly,

Flashing.....



CA is flashing  
in the upper left corner.

Press again:  
the calibration is done.



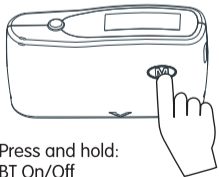
CA disappears.

## Quick Guide

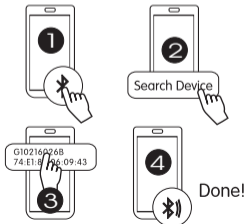
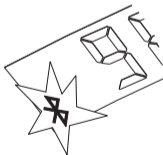
### BT turning On/Off and Connection

See P14 of the manual

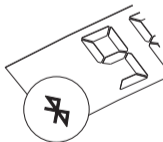
Press and hold:  
BT On/Off

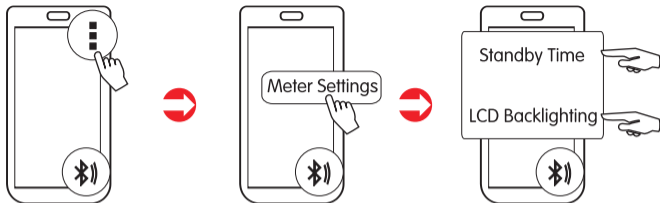


Flashing  
in the lower left corner.



The flashing is stopped.  
The connection is done.

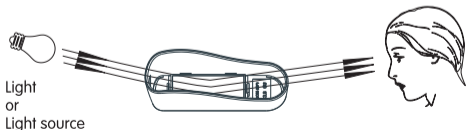




After BT connection is done,

**Note**

It is not available for  
MG6-S1 and MG6-SS.


**Note**

1. If there is dirt on the Calibrating Tile, it will seriously affect the accuracy of the meter due to forced calibration.
2. If the surface of specimen or the lenses of the meter is dirty, it will also cause an invalid result.
3. If E0 or E1 is shown on the upper left corner of the screen when turning on, that means the Calibrating Tile is in dirt or scratched, please refer to page 10~12 of the manual for solution.